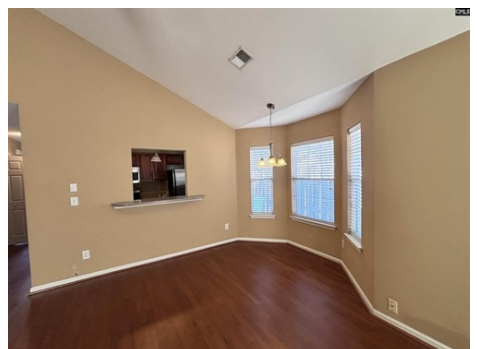




\$ 215,000



501 Red Ivy Ln, Columbia, SC 29229

- » Beds: 3 | Baths: 2 Full
- » MLS #: 601536
- » Single Family | 1,375 ft<sup>2</sup> | Lot: 3,920 ft<sup>2</sup>
- » More Info: [501RedIvyLn.IsForSale.com](http://501RedIvyLn.IsForSale.com)



Tricia Kim  
 Property Pros LLC @ Keller  
 Williams Palmetto  
 (803) 699-7000 (Office)  
 (803) 960-1615 (Realtor)  
 (803) 608-4569 (Realtor)  
[tricia@fowlerteamsc.com](mailto:tricia@fowlerteamsc.com)  
<http://www.peggyfowler.kw.com>

**kw PALMETTO**  
 KELLERWILLIAMS, REALTY

Keller Williams Palmetto  
 1523 Huger Street  
 Suite B  
 Columbia, SC 29201  
 (803) 722-1900

This charming patio home offers a perfect blend of comfort and convenience, featuring two spacious bedrooms on the main floor and an additional bedroom situated above the one-car garage. Nestled in an easy-living community in NE Columbia, residents enjoy close proximity to a variety of shopping and dining options, with quick access to I-77 and I-20 for effortless commuting to Shaw Airforce Base, Fort Jackson, Scout Motors in Blythewood & Downtown Columbia. The exterior boasts a well-maintained front yard, with maintenance included in the HOA fees, while the easy-to-maintain fenced backyard provides a private oasis for relaxation or entertaining. Step inside to discover a welcoming living room adorned with vaulted ceilings, a cozy fireplace, and a delightful bay window that fills the space with natural light. The master suite is a true retreat, featuring vaulted ceilings and a private bathroom equipped with a double sink vanity, a garden tub with a shower, a linen closet, and an oversized walk-in closet with ample shelving for all your storage needs. The kitchen showcases elegant Corian countertops, tiled flooring, and stainless steel appliances, including a microwave conveniently positioned over the stove. Both bathrooms are tastefully finished with tile, adding a touch of sophistication. The home is ideally located across from the community's common area, which features a tranquil water feature and benches.

